

---

---

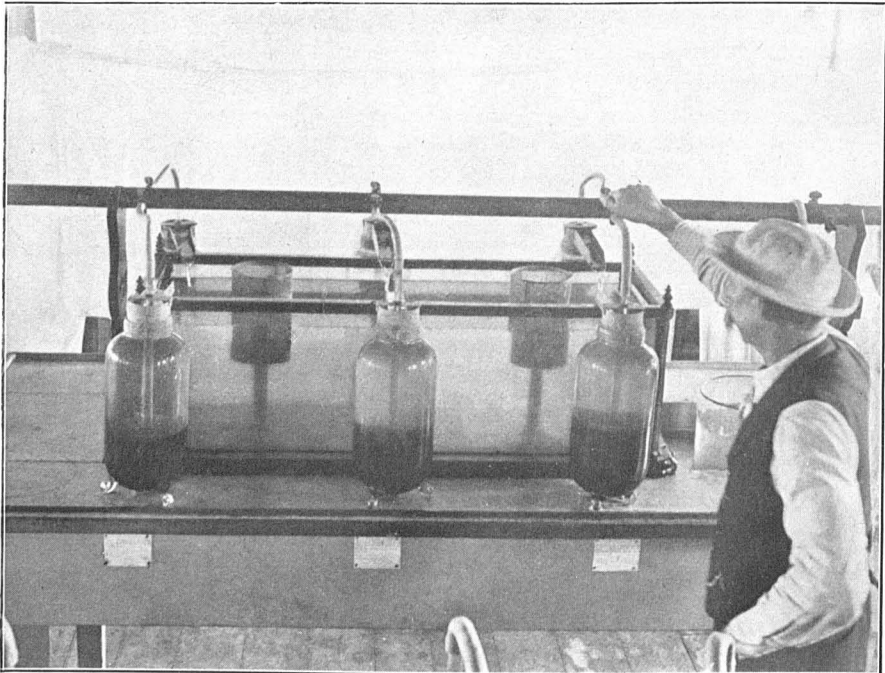
REPORT OF THE SPECIAL COMMISSION FOR  
THE INVESTIGATION OF THE LOBSTER  
AND THE 'SOFT-SHELL CLAM.

---

- I. GENERAL ACCOUNT OF THE LOBSTER AND CLAM INVESTIGATIONS.  
BY HUGH M. SMITH.
- II. EXPERIMENTS IN LOBSTER REARING. BY GEORGE H. SHERWOOD.
- III. THE CAUSES OF DEATH IN ARTIFICIALLY REARED LOBSTER FRY.  
BY FREDERIC P. GORHAM.
- IV. CONDITIONS GOVERNING EXISTENCE AND GROWTH OF THE SOFT  
CLAM. BY JAMES L. KELLOGG.
- 
-



METHOD OF STRIPPING EGGS FROM A LOBSTER



IMPROVED ARRANGEMENT FOR HATCHING LOBSTER EGGS AND HOLDING FRY.

From a series of open-top jars the fry as hatched are discharged into a large rectangular tank.