

DCP Searsport, LLC
USACE Application No.: NAE-2010-02347
Response to USACE Information Request
Dated January 4, 2012

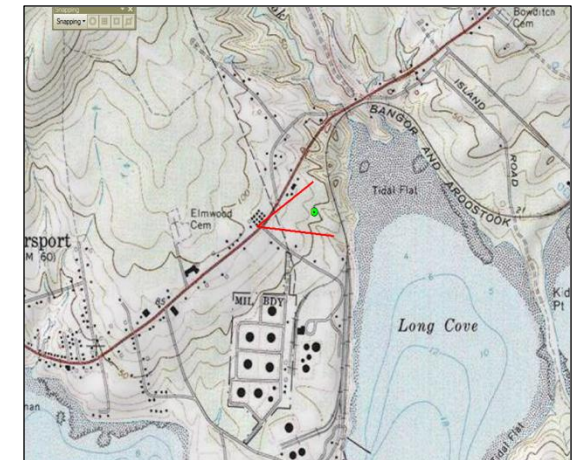
RESPONSES TO REQUEST FOR ADDITIONAL INFORMATION

ATTACHMENT B

Visual Simulations of the Developed Site



VIEWPOINT LOCATION MAP



EXISTING CONDITIONS

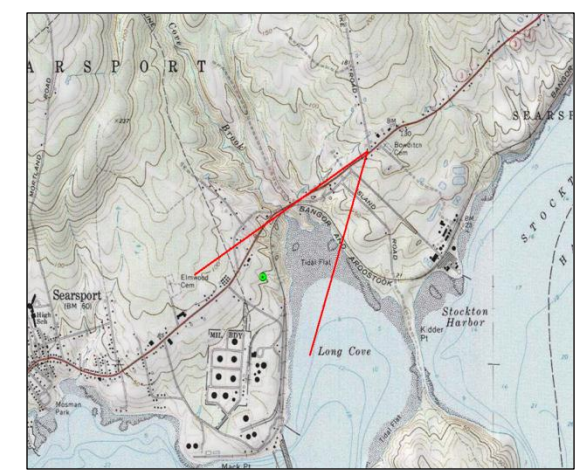


**PHOTOSIMULATION
DCP MIDSTREAM
SEARSPORT, ME**

VIEW LOOKING EAST FROM THE US1/STATION AVENUE - PROPOSED CONDITIONS



VIEWPOINT LOCATION MAP



EXISTING CONDITIONS

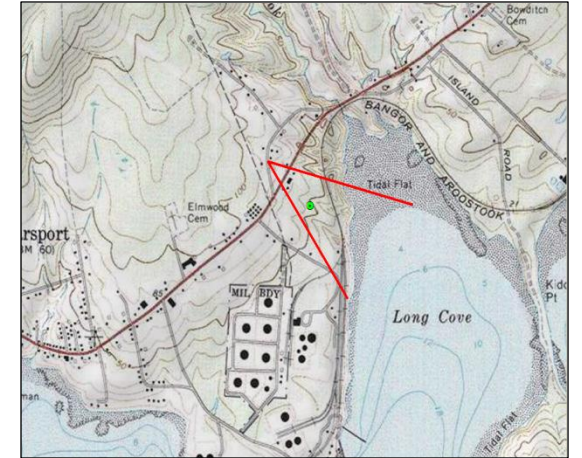


**PHOTOSIMULATION
DCP MIDSTREAM
SEARSPORT, ME**

VIEW LOOKING SOUTHWEST FROM US1/TURNPIKE ROAD - PROPOSED CONDITIONS



VIEWPOINT LOCATION MAP



EXISTING CONDITIONS

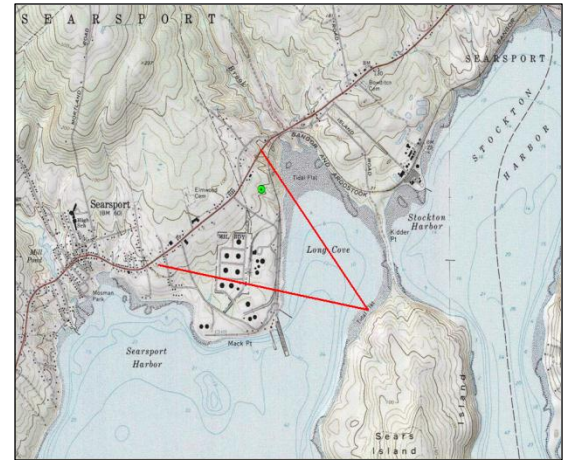


**PHOTOSIMULATION
DCP MIDSTREAM
SEARSPORT, ME**

VIEW LOOKING SOUTHEAST FROM OLD RT 1 - PROPOSED CONDITIONS



VIEWPOINT LOCATION MAP



EXISTING CONDITIONS



PHOTOSIMULATION
DCP MIDSTREAM
SEARSPORT, ME

VIEW LOOKING NORTHWEST FROM SEARS ISLAND - PROPOSED CONDITIONS